

X-Altra Mini II PCB Dimensions

This information is provided for builders wishing to use individual X-Altra Mini II boards in their own projects.

To buy PCB's please visit the [X-Altra Mini II Home Page](#)

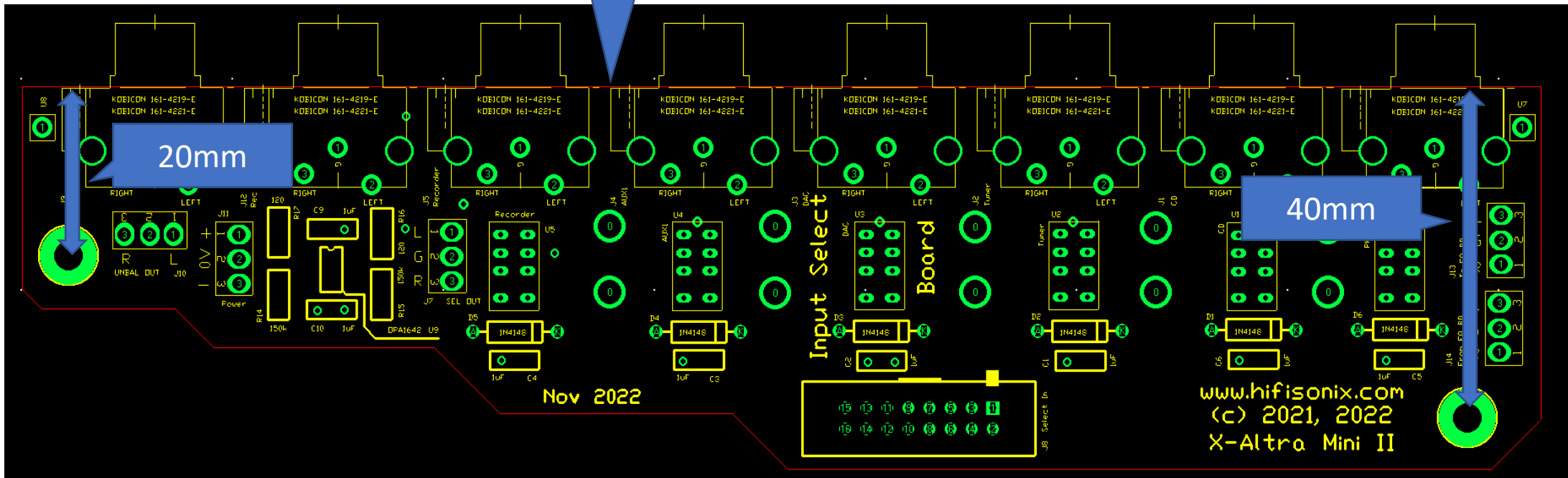
All mounting holes are 3.5mm in diameter to accept M3 mounting hardware except where noted

www.hifisonix.com

Input Relay Select Board

Kobicon RCA connectors are 8 off on 22mm centres

Overall board dimensions are 184mm wide by 47mm high



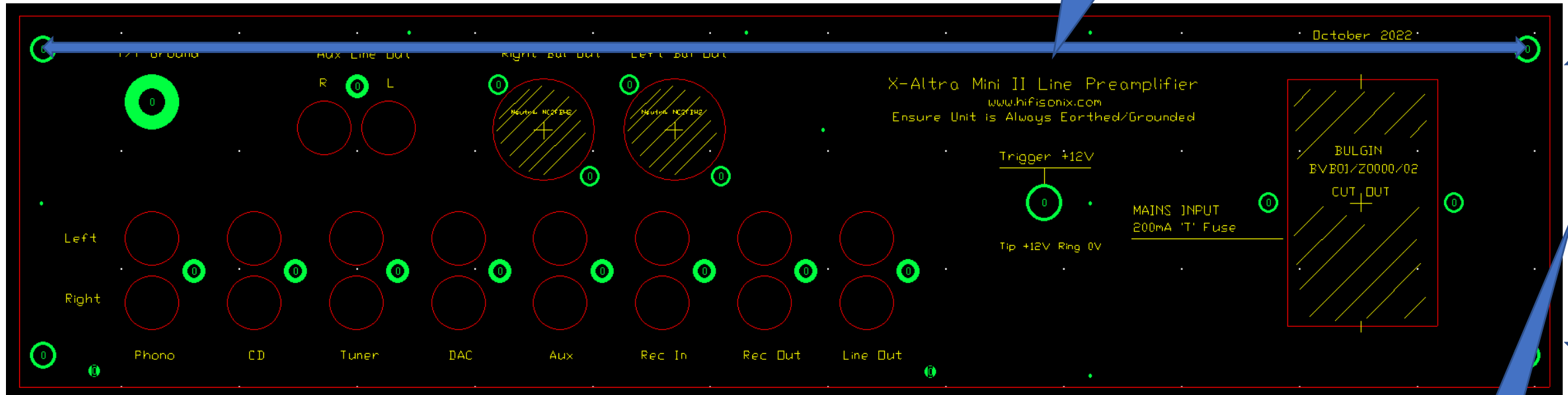
Mounting hole centres are 168mm apart

This board screws directly onto the rear panel with 8 off No. 4 x 1/2" (2.77mm x 12.5mm) self tapping Philips Head screw - see next slide

X-Altra Mini Rear Panel

PCB dimensions are 330mm x 80mm

Hole centres 320mm

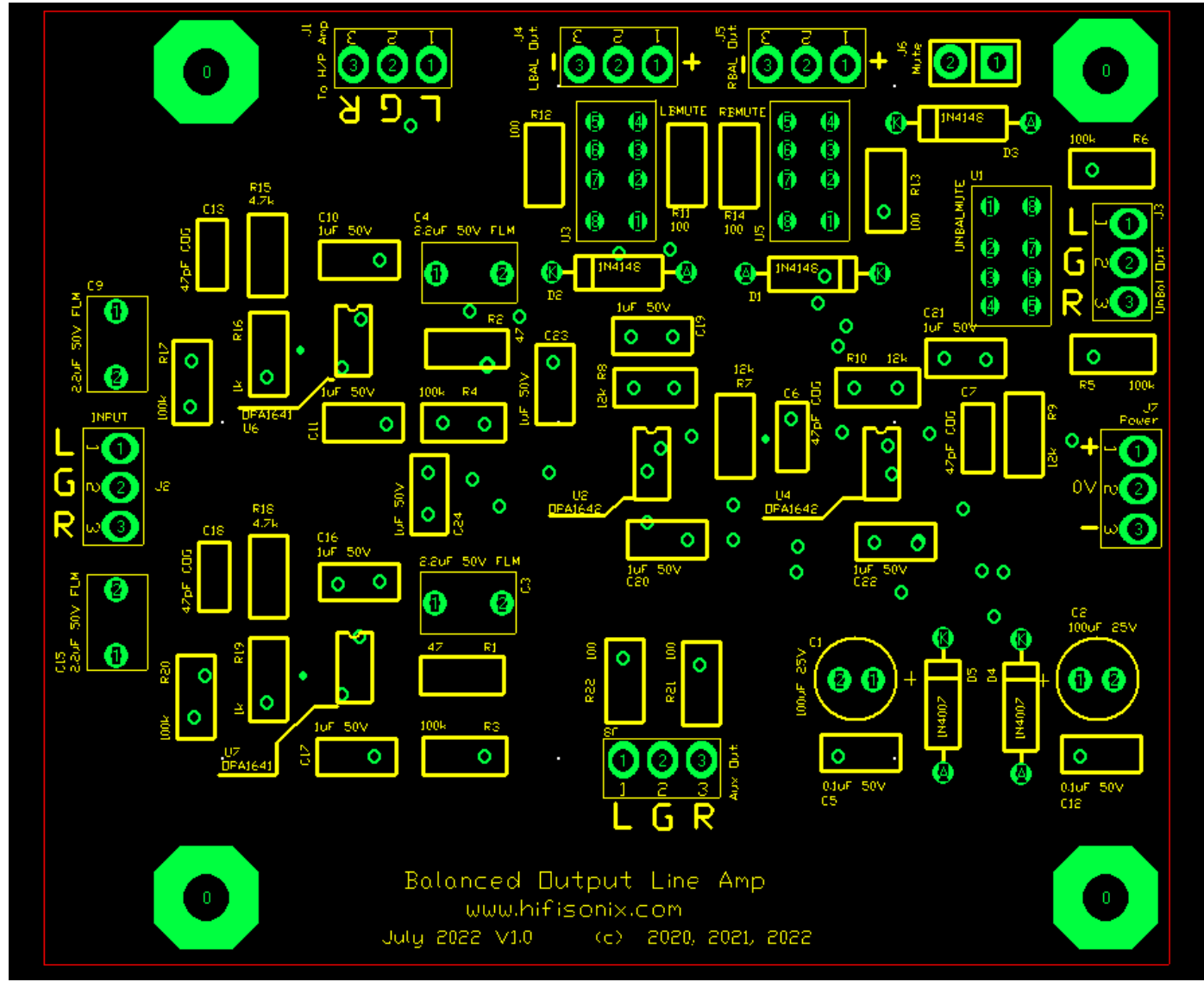


Hole centres 66mm

Balanced Line Amp

72mm

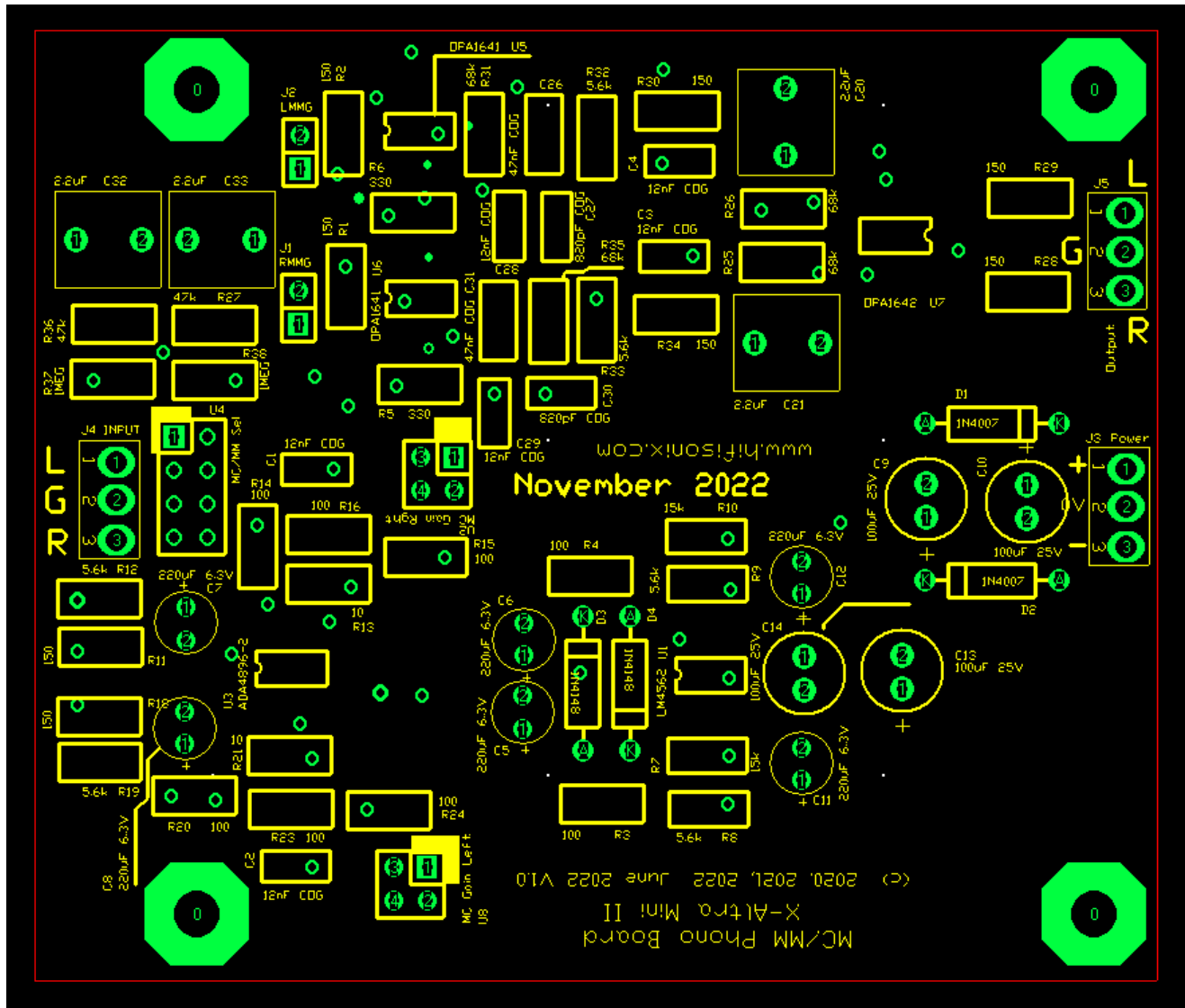
85mm



Hole centres 62.5mm

Hole centres 68mm

MC/MM Phono Amp



85mm

72mm

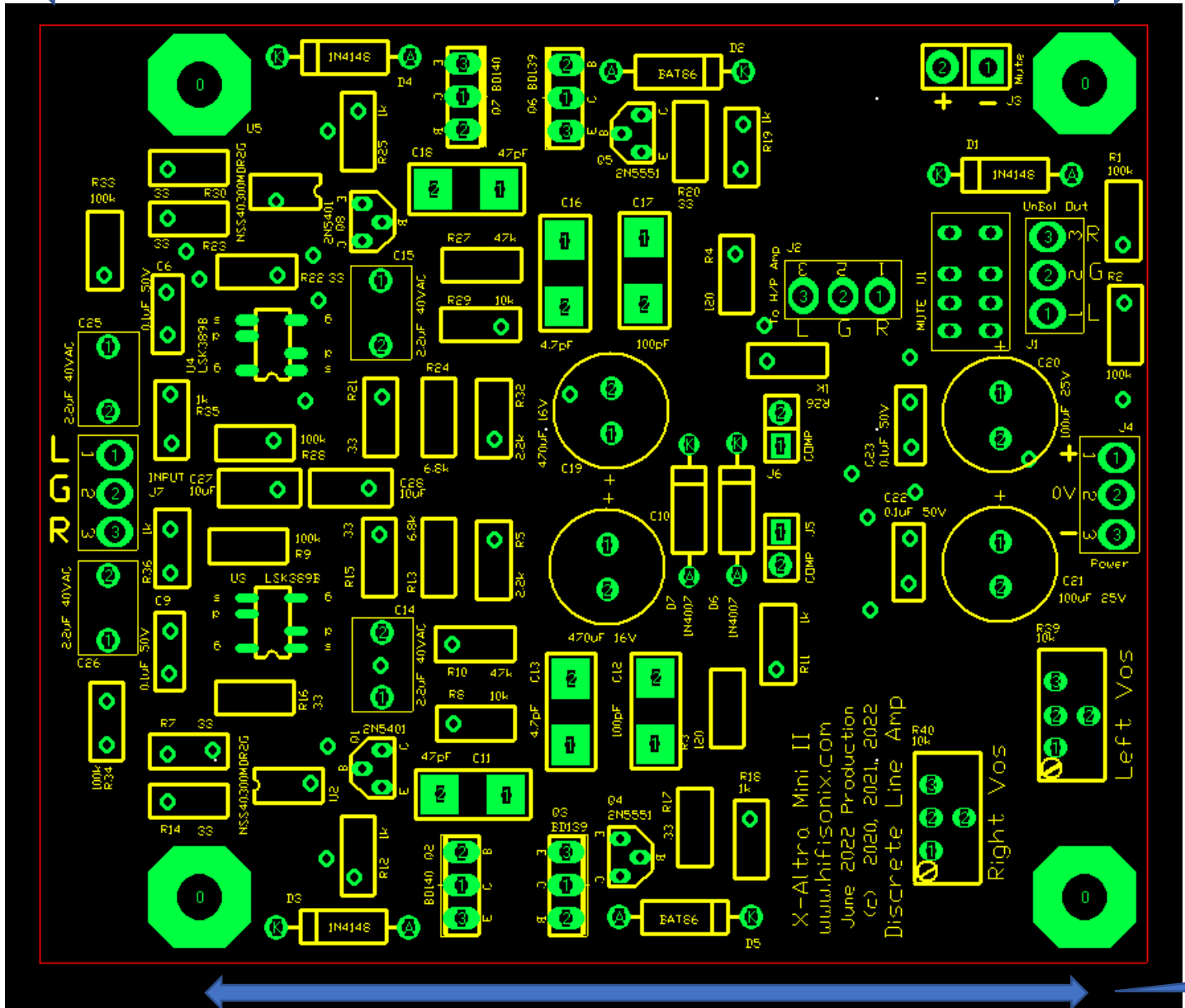
Hole centres
62.5mm

Hole centres
68mm

Discrete Line Amp

72mm

85mm



Hole centres 62.5mm

Hole centres 68mm

X-Altro Mini II
www.hifisonix.com
June 2022 Production
(c) 2020, 2021, 2022
Discrete Line Amp

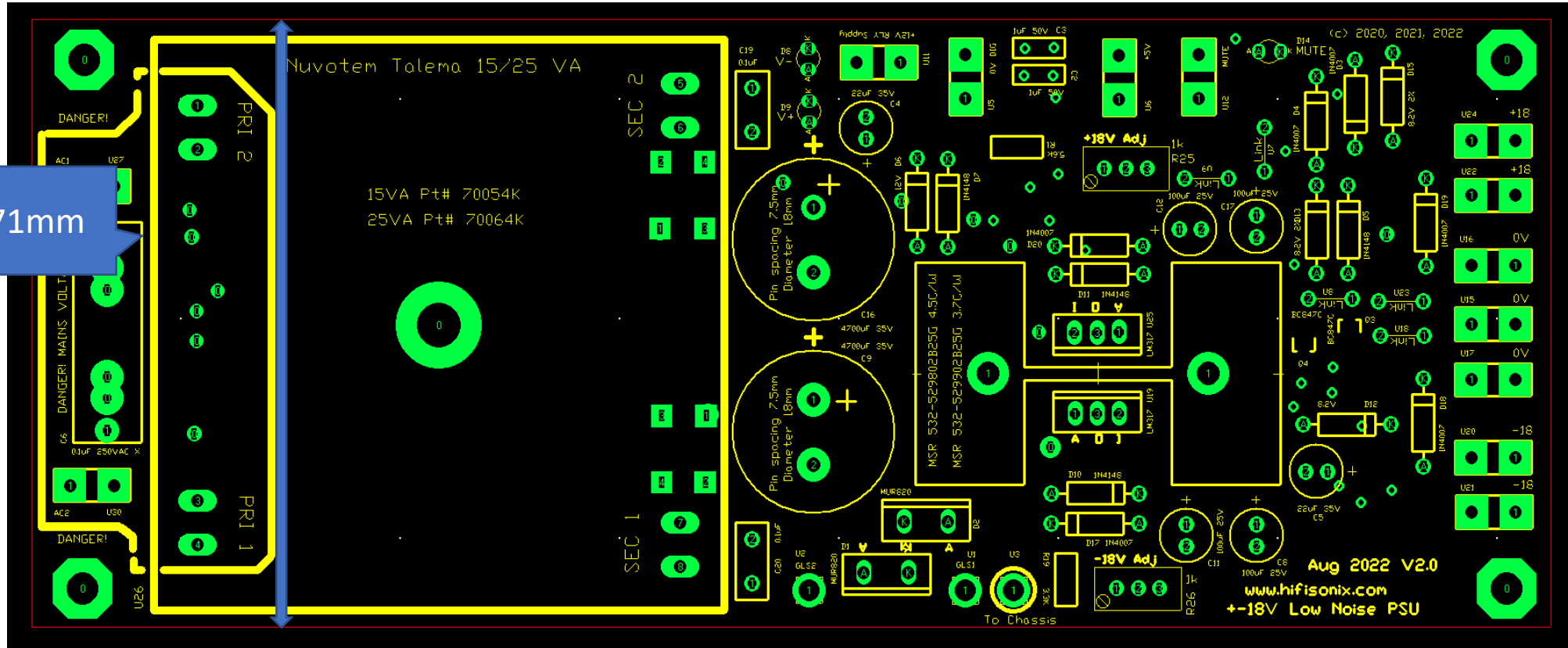
Standard PSU

176mm

71mm

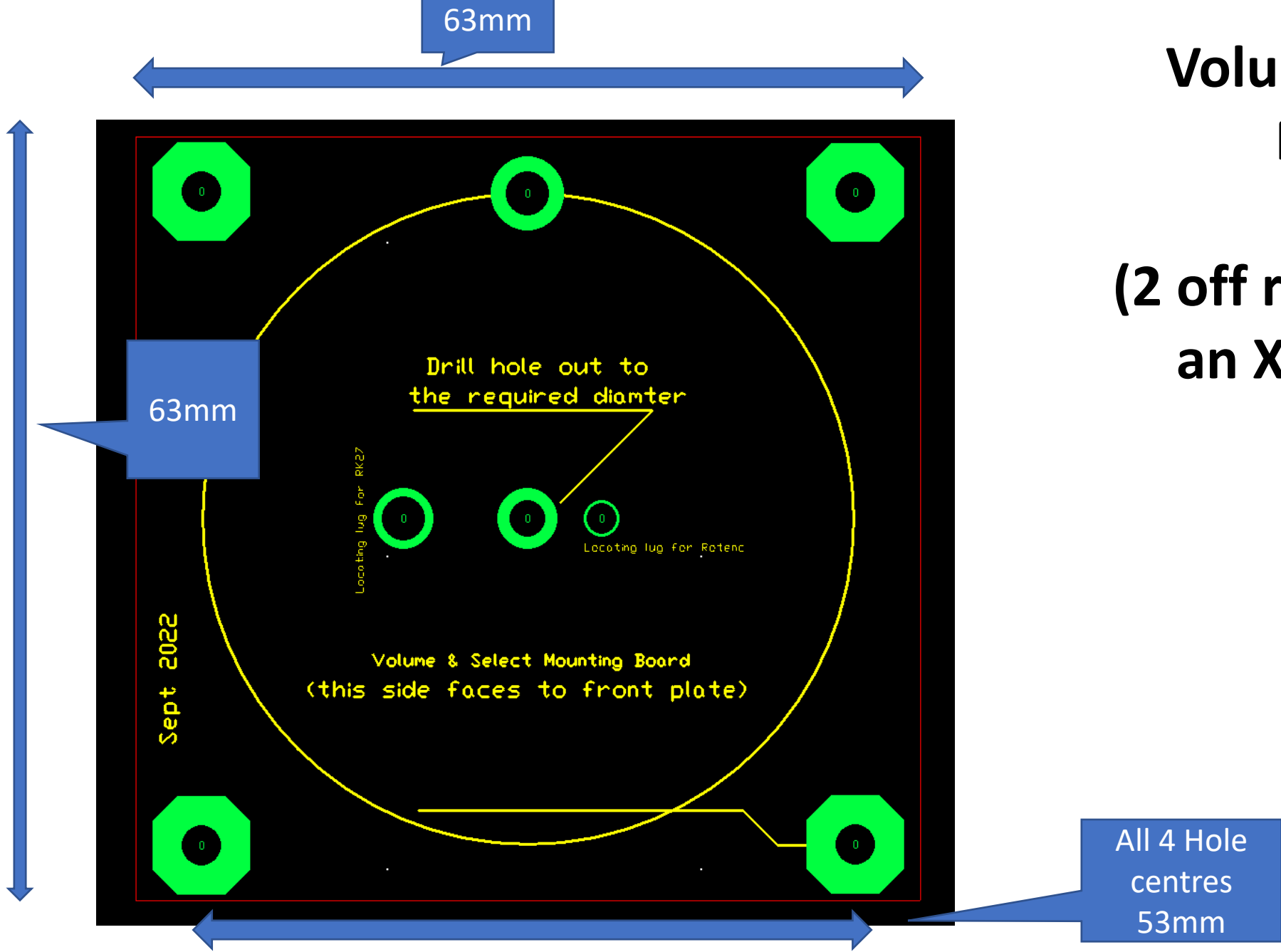
Hole centres
61mm

Hole centres
165mm

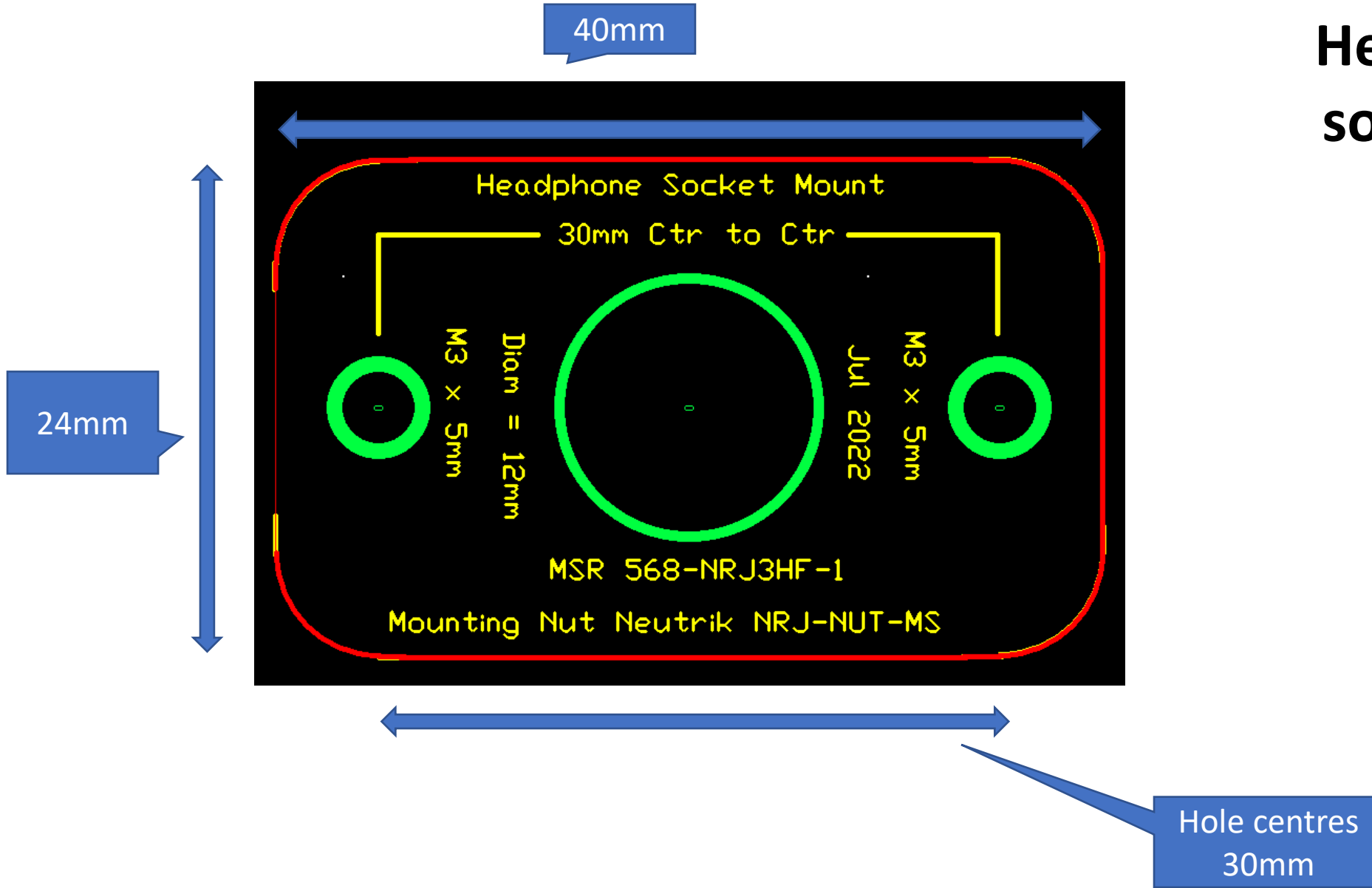


Volume and Select Mounting Board

(2 off required to build an X-Altra Mini II)



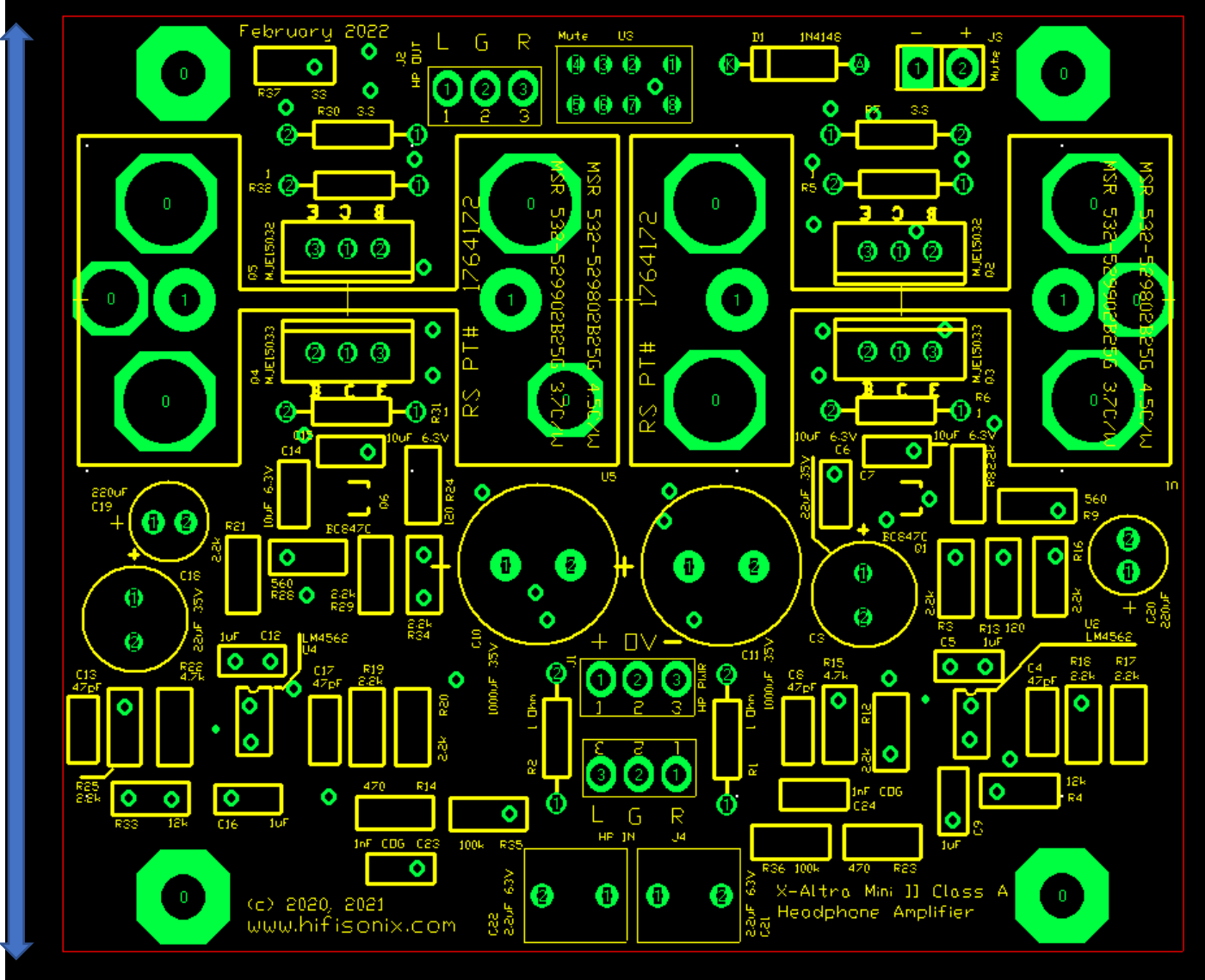
Neutrik Headphone socket Mtg board



HPA-1 class A Headphone Amp

73mm

87.5mm



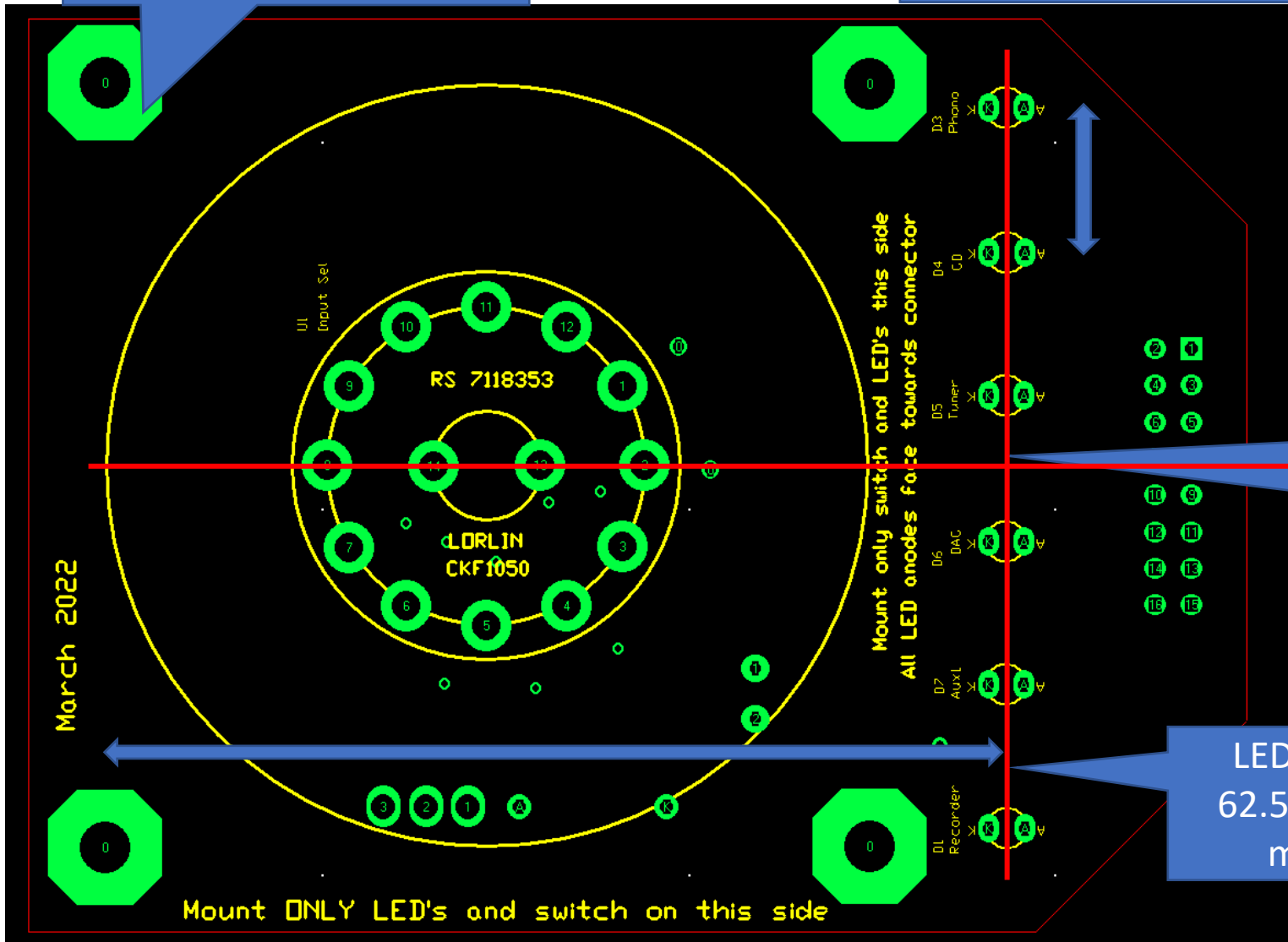
Hole centres 64mm

Hole centres 68mm

Hole centres are 53mm x 53mm

Overall board dimensions are 64mm x 85mm

Input Select Control board (used in the manual version)



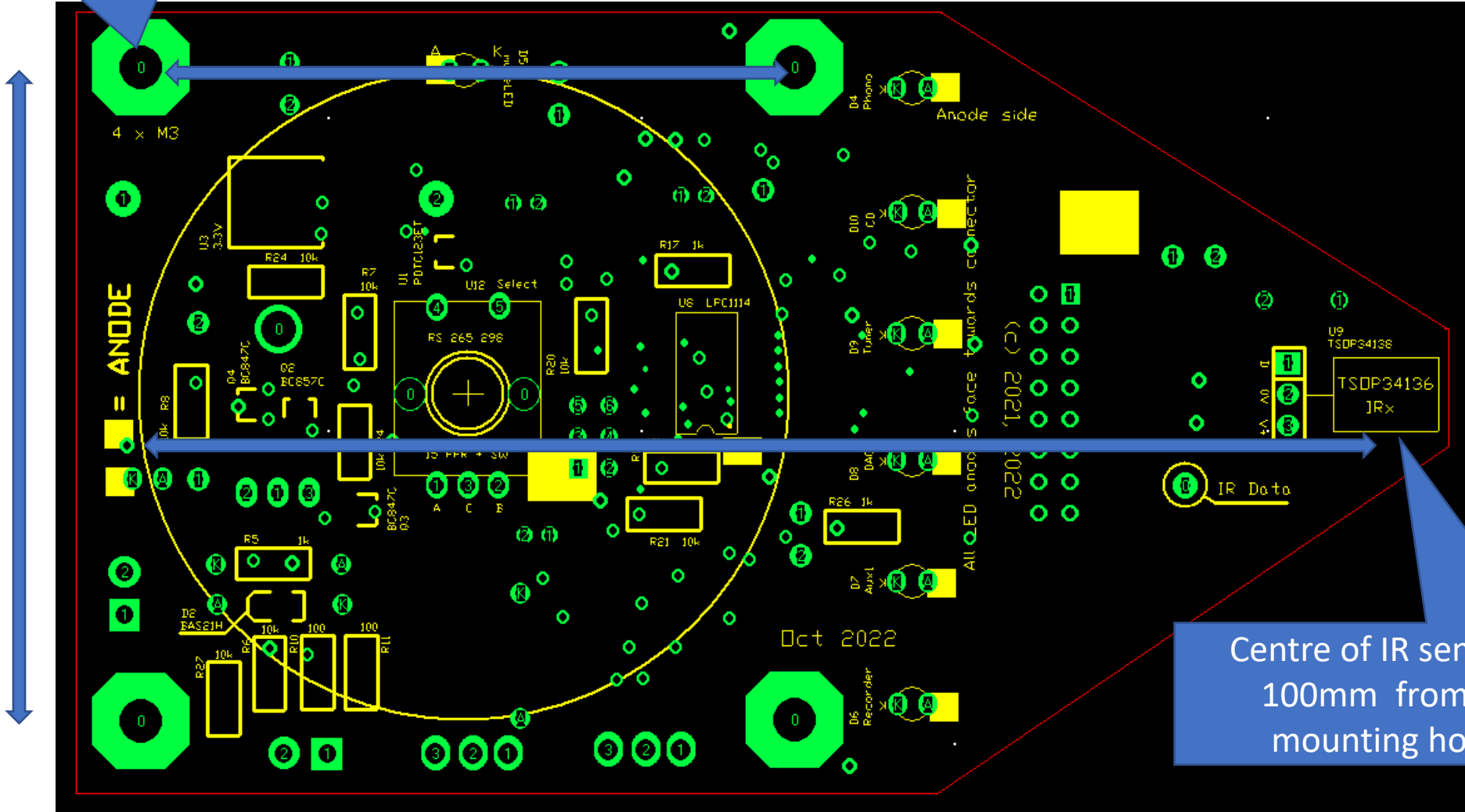
6 x 3mm LED's on 10mm centres (same for Remote control board on next slide) centred at the intersection here

LED hole centres are 62.5mm from furthest mounting holes.

Remote Control board

Hole centres are 53mm x 53mm

Overall board dimensions are 64mm x 112mm



Centre of IR sensor is 100mm from far mounting holes