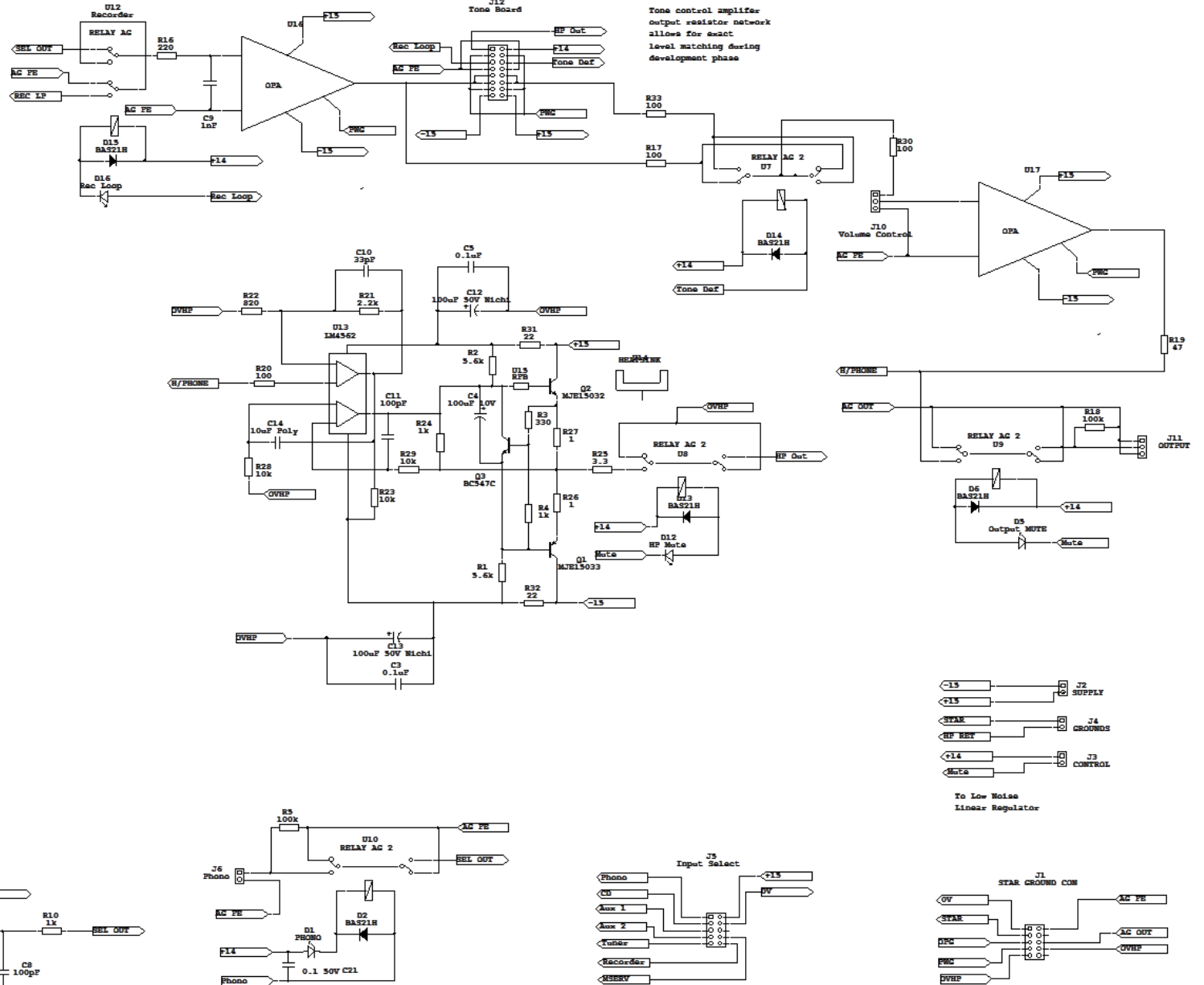
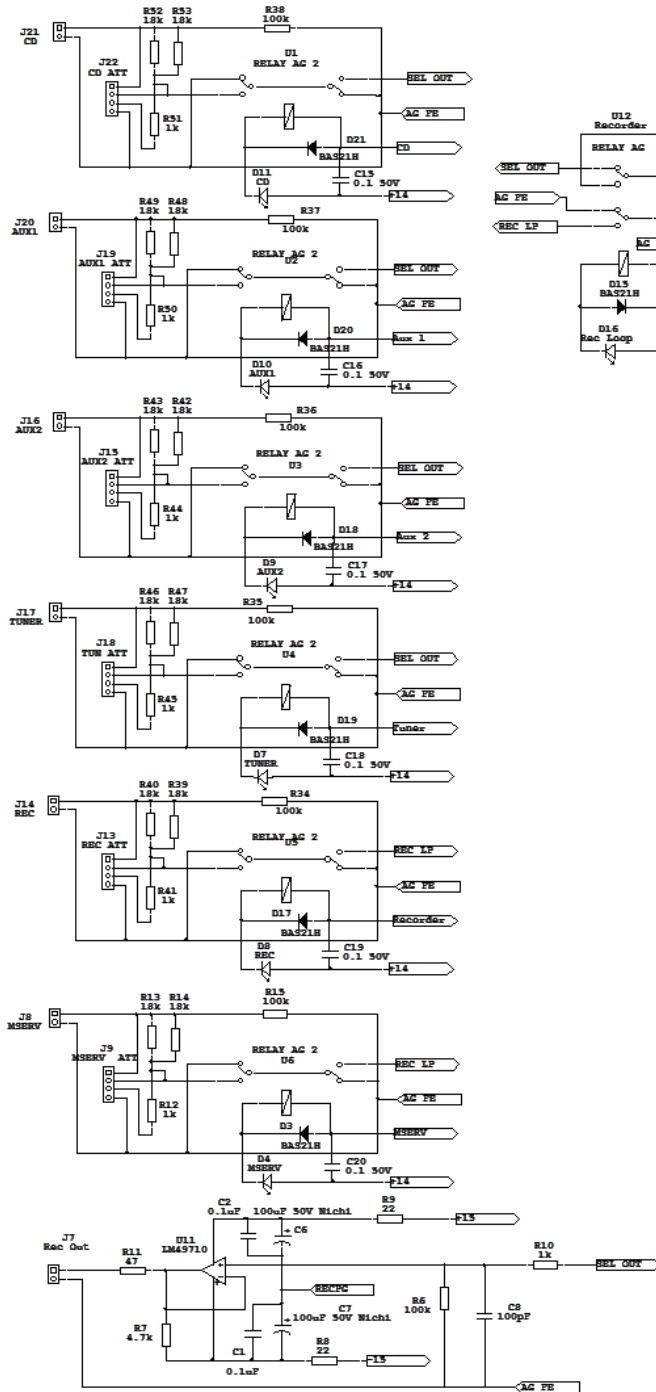


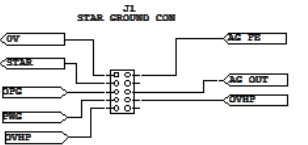
Ovation Symphony Preamp  
main analog board – 1  
channel shown only



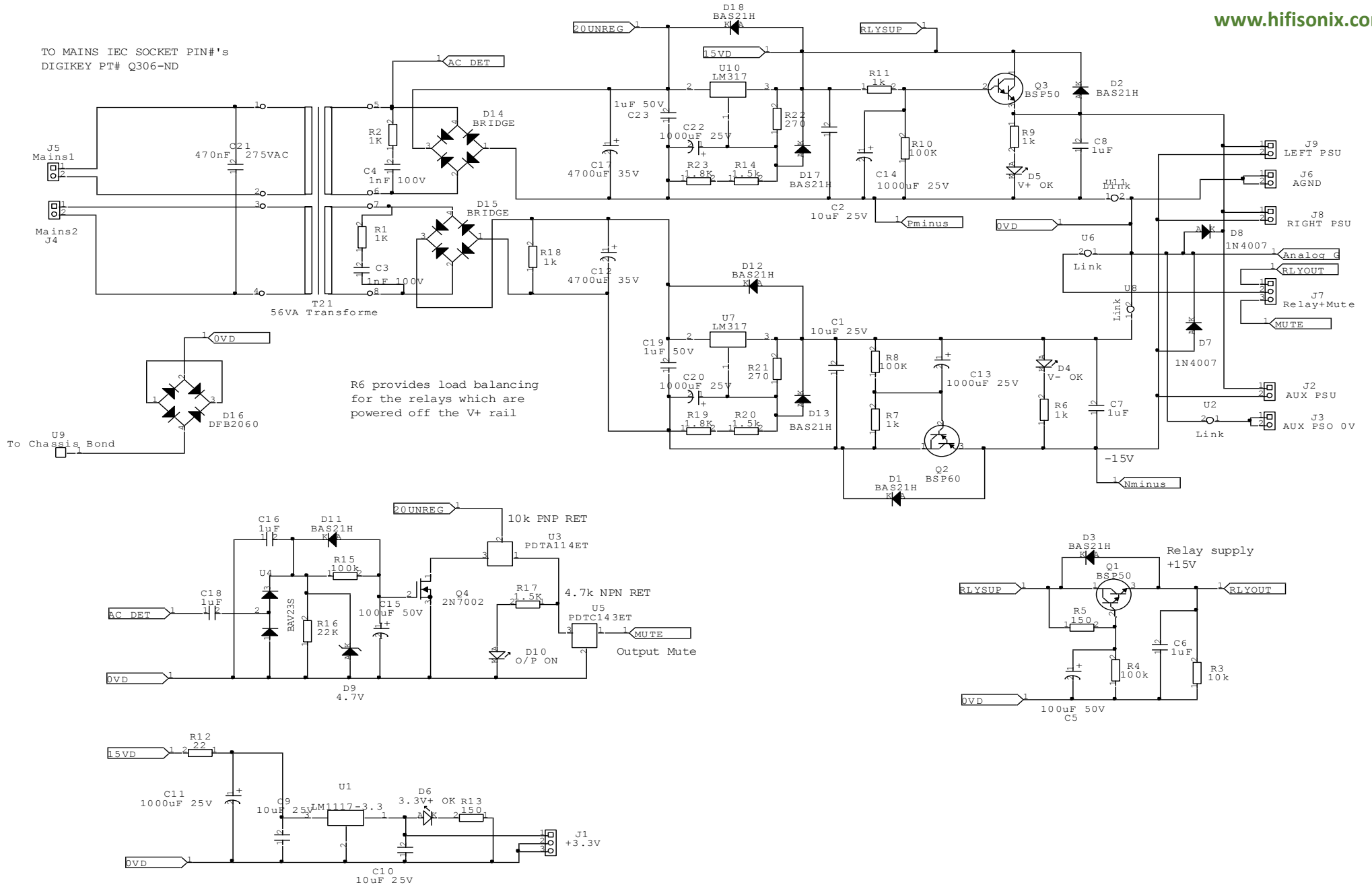
Tone control amplifier  
Output resistor network  
allows for exact  
level matching during  
development phase

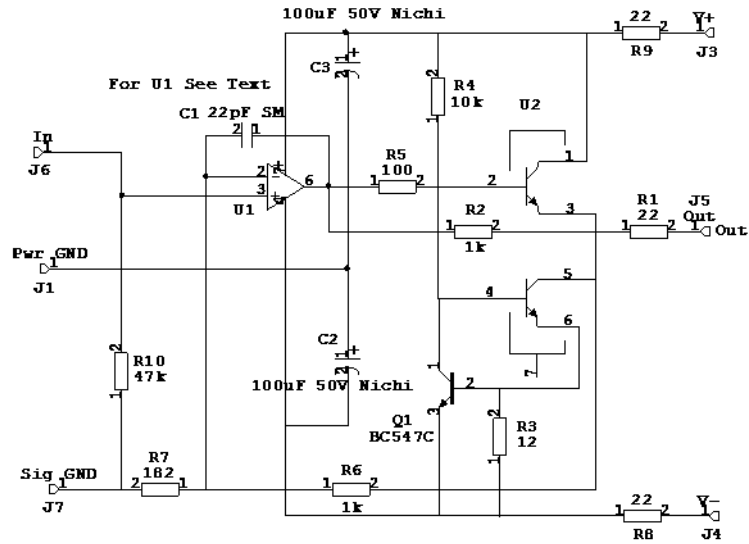
- <F13 SUPPLY
- <F15 GROUND
- <F14 CONTROL
- <MUTE CONTROL

To Low Noise  
Linear Regulator



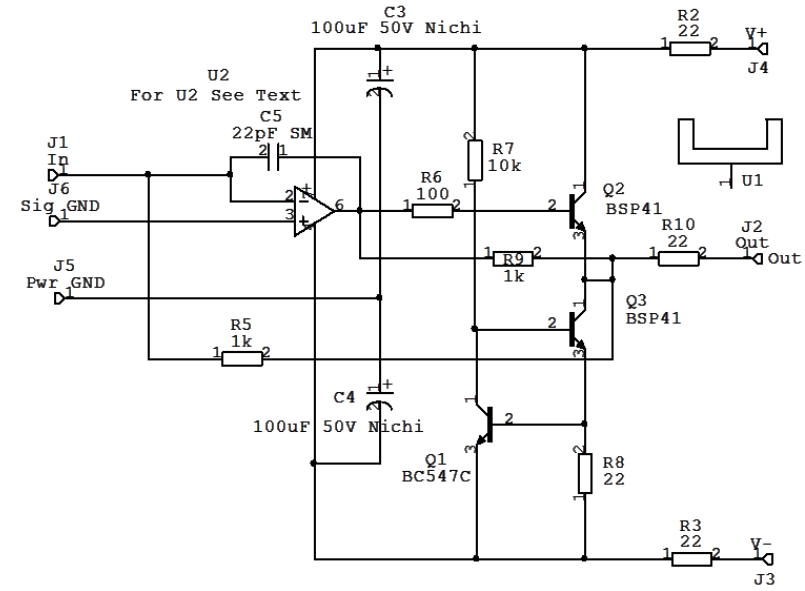
# Ovation Symphony 'relaxed' ultra low noise Power Supply





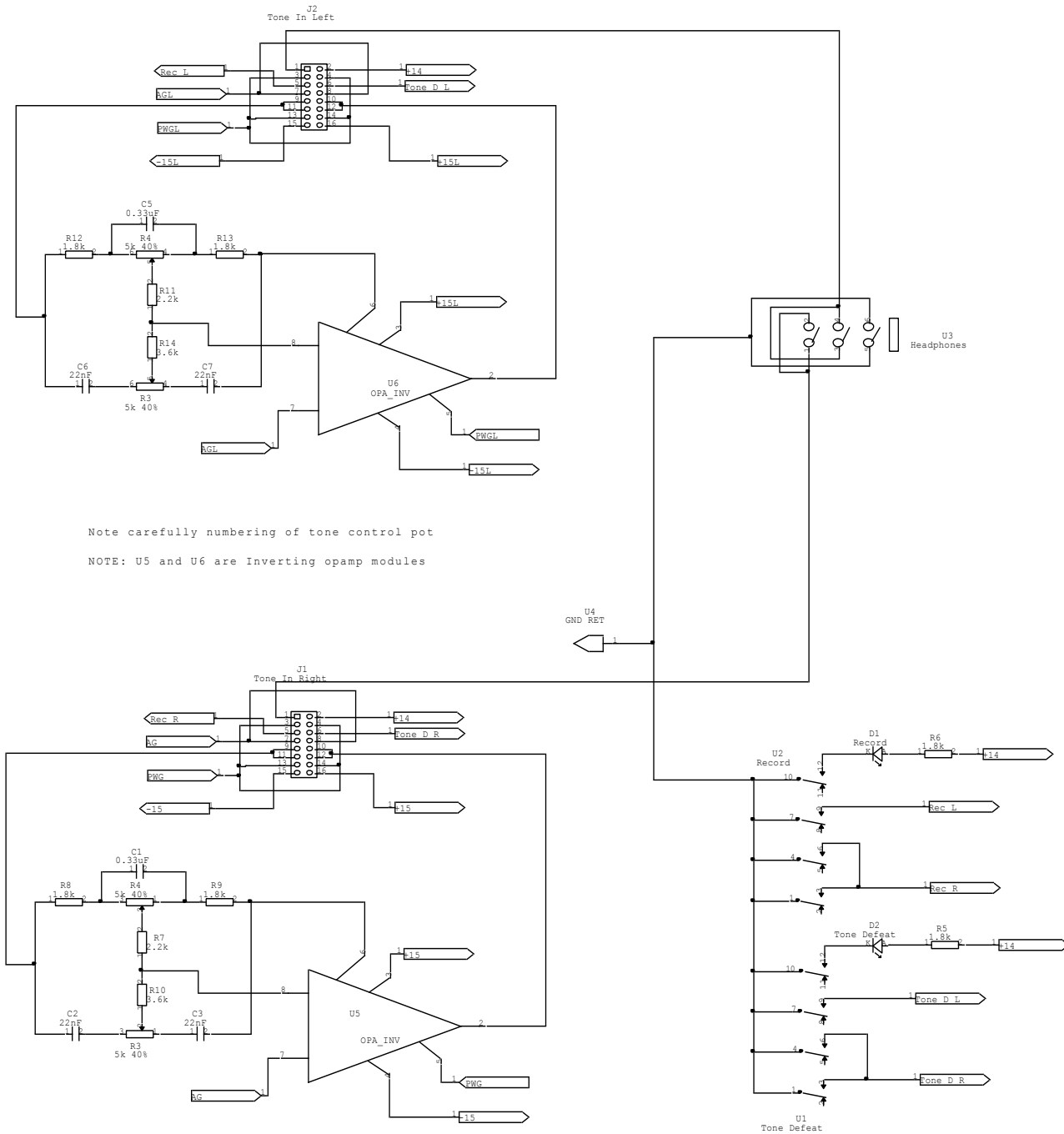
'Symphony' non-inverting class A opamp

C4 22pF SM  
 C5 22pF SM  
 Opamp optional comp caps for PCB



'Symphony' Inverting class A opamp

C2 22pF SM  
 C1 22pF SM  
 Optional comp caps for opamp



'Symphony' Baxandall tone control board (two channels)